



**GILI GURVITZ - OWNER
RICK SHADRACH LAZAR - OWNER**

**27 PRIMROSE AVENUE TORONTO, ON M6H 3V1
TEL: 416.538.6342 • CEL: 647.295.0052
FAX: 416.538.9016
EMAIL: INFO@DRUMARTZ.COM
WWW.DRUMARTZ.COM**



DRUM ARTZ STUDIO is a state of the art film and sound stage in Toronto's downtown west-end, servicing local and international music, photography and commercial film productions & recordings.

1ST FLOOR STAGE:

- 32' x 80' area, 2560 square feet
- Height 15'
- 20' x 50' cyc. wall and cove
- 9' x 9' isolation booth
- Fully soundproofed and air conditioned
- Sophisticated ventilation for quality ambient air
- 1200 amp three-phase camlock electrical service
- Solid steel grid with quick adjustable rigging points
- Smoke evacuation for SFX
- H2O SFX system
- Two loading doors for speedy set-up
- Monitored security system
- 24 hour availability

2ND FLOOR:

- Fully equipped audio control room with 5.1 surround sound system comprised of JBL LSR6300 monitors
- Large hair/makeup room & green room
- Industrial Kitchen
- Full bathroom with shower
- Roof-top deck
- Monitored security system

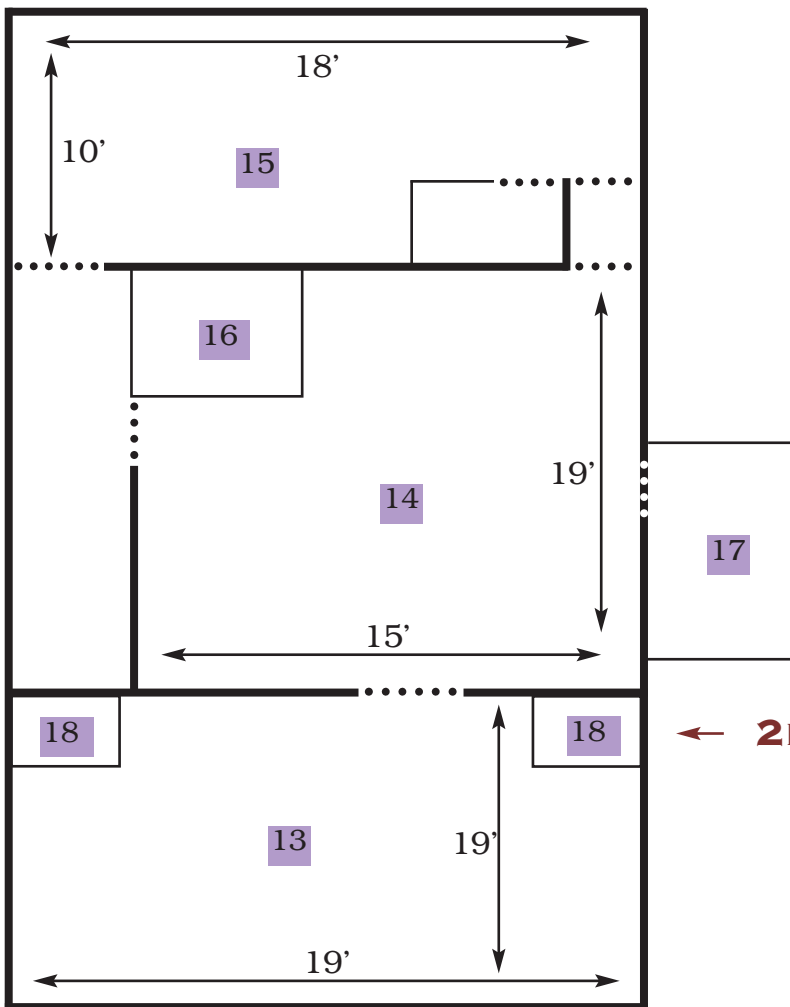
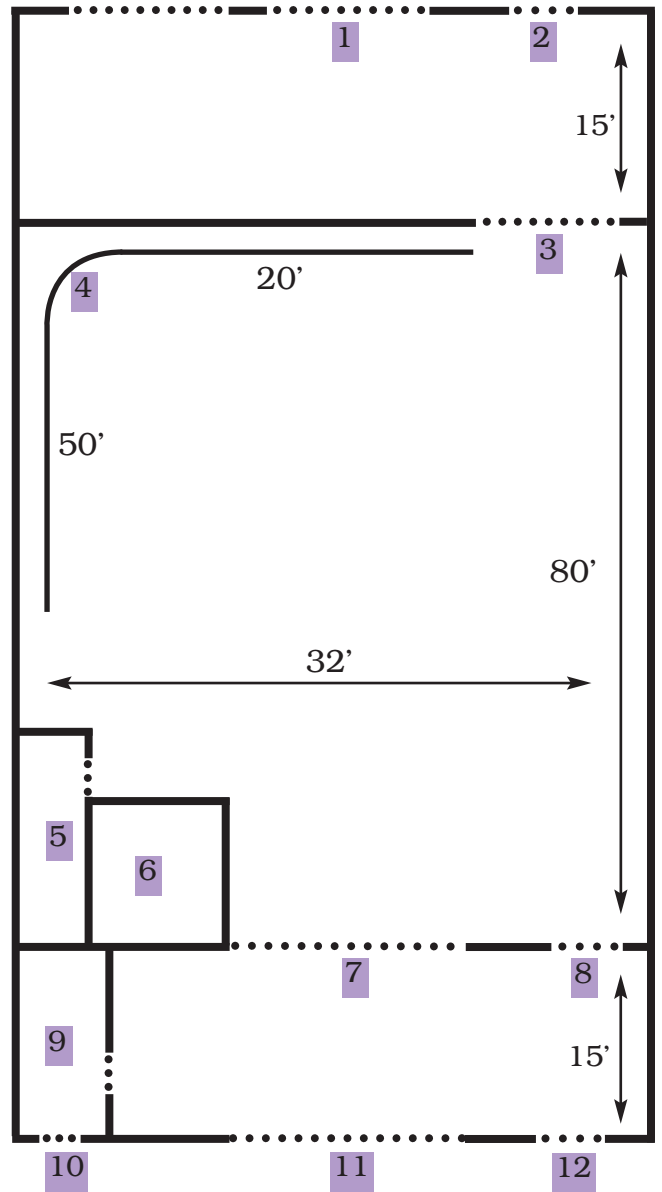
Drum Artz Studio is Toronto's largest project studio!
Music recording services are offered by **Kick Audio**, owned by multi-award winning engineer, mixer, producer, editor and educator, **Jeff Wolpert**
Tel: 416-538-5917 • Email: jeffwolpert@rogers.com

Digital Photography services are offered by:



STAGE FLOOR PLAN: →

- 1 - East loading door
- 2 - East fire exit
- 3 - East stage door
- 4 - Cyclorama Wall (50' x 20')
- 5 - Stage bathroom
- 6 - Isolation Booth
- 7 - West stage door
- 8 - Stage fire exit
- 9 - Stairwell
- 10 - Front door
- 11 - West loading door
- 12 - West fire exit



← **2ND LEVEL FLOOR PLAN:**

- 13 - Dressing/makeup room
- 14 - Industrial kitchen
- 15 - Audio control room
- 16 - Full bathroom with shower
- 17 - Outdoor patio
- 18 - Dressing booths/closets

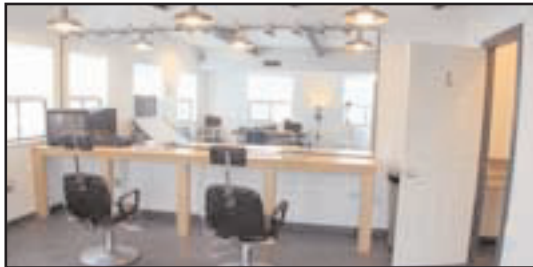
Stage



Stage



Hair/Makeup Room



Hair/Makeup Room



Industrial Kitchen



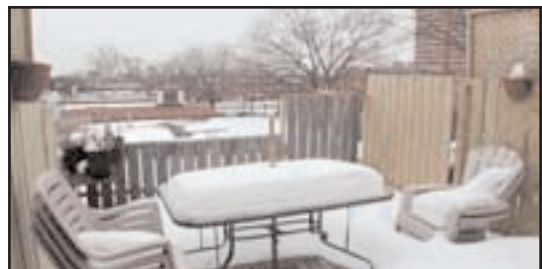
Industrial Kitchen



Full Washroom with Shower



Roof-top Deck

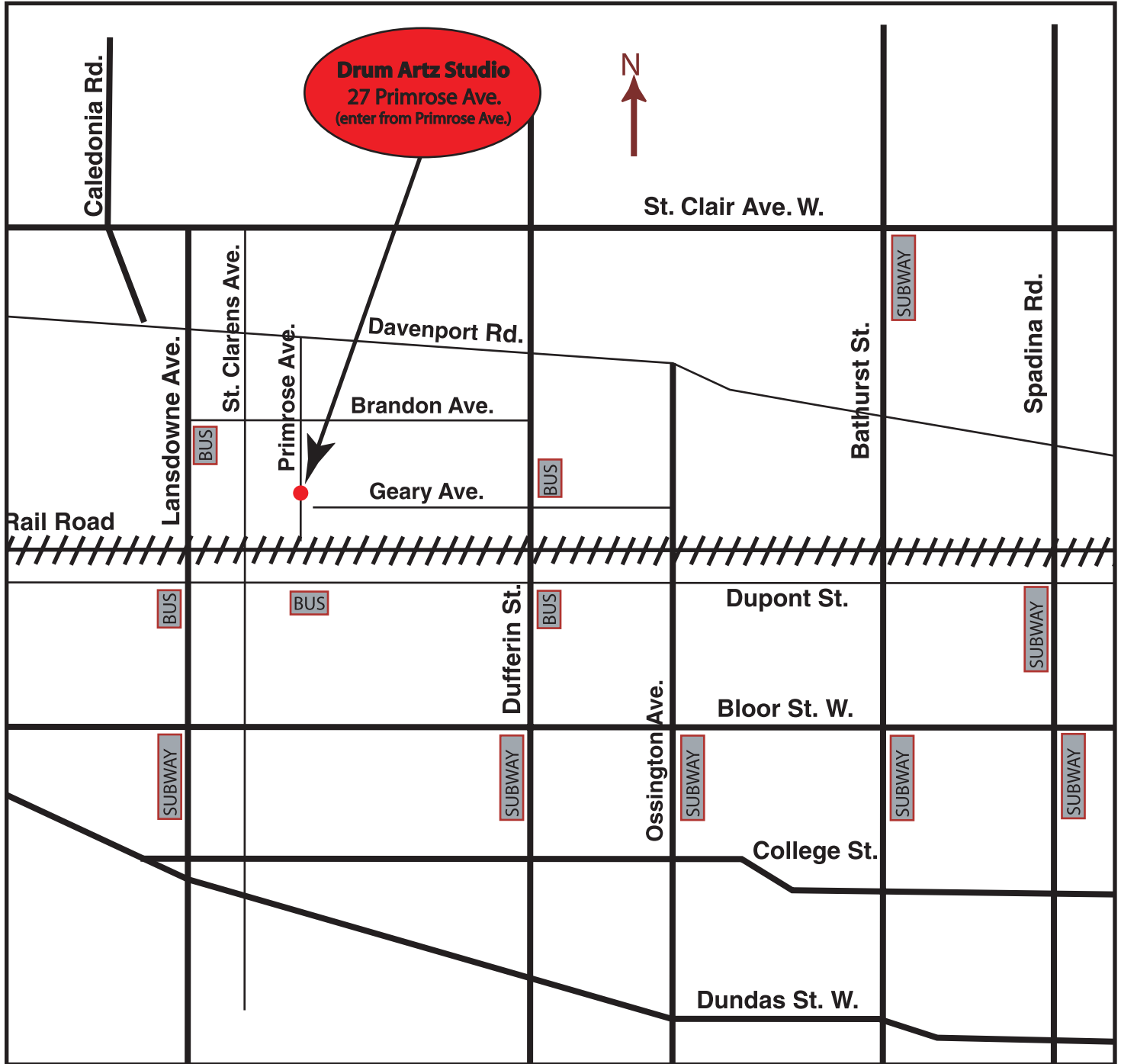


Rear Entrance/East Loading Doors



Main Entrance/ West Loading Door





The main entrance is on **27 Primrose Avenue**.

Loading is usually from the back entrance on **Geary Avenue** (Geary is a dead end and does not connect to Primrose Avenue)